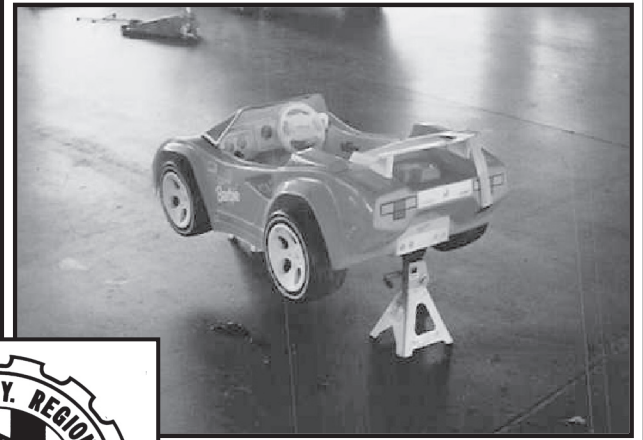
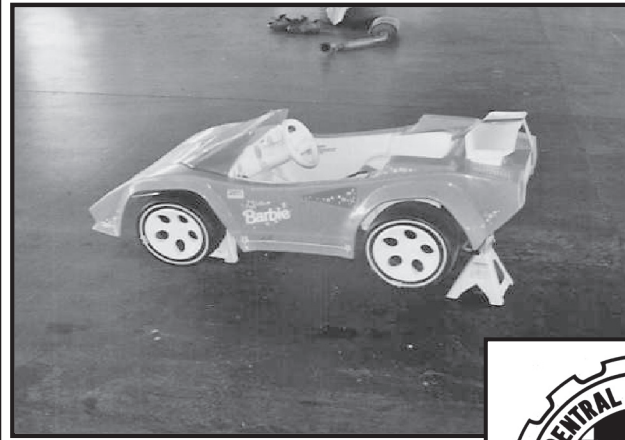


The **SNARLING EXHAUST**

August 2005

A publication of the CNY Region Sports Car Club of America



In addition to Autocrossing is Mazda Miata, club secretary Jay Cartini has gone open wheel road racing this season. His car, pictured here, draws a lot of attention in the garage. Jay credits Danica Patrick with giving him the inspiration to take the plunge into open wheel racing this season. *YOU GO GIRL!...oops sorry!....You go Jay!*

- From Rex and Bruce

IN THIS ISSUE:

Fairground Results

SCCA Annual Picnic Info

Porsche Autocross Info

NEXT GENERAL MEMBERSHIP MEETING:

***Our Annual Picnic!
Wednesday, August 10th,
Onondaga Yacht Club at 6pm***

CENTRAL NEW YORK REGION SCCA REGIONAL OFFICERS/CONTACTS

Regional Executive

JOSEPH KRAMER
5021 Chesapeake Drive
North Syracuse, NY 13212
315-451-2903 (H)
315-456-1038 (W)

Treasurer

FRANK BEYER
P.O. Box 131
Brewerton, NY 13209
315-449-2128

Merchandise

JOSEPH ZINGARO
7396 Liffey Lane
Liverpool, NY 13088
315-451-5933

Assistant Regional Executive

MIKE DONOFRIO
4913 Look Kinney Circle
North Syracuse, NY 13212
315-451-7169

Newsletter Editor

AMY BIZZOZERO
9014 Jackson Street
Weedsport, NY 13166
mrsbizzo@twcny.rr.com

Parliamentarian

LEE HIDY
209 Gulf Road
Camillus, NY 13031

Secretary

JAY CARTINI
5351 Carrick Circle
Brewerton, NY 13029
315-676-4776

Membership

TAMMY FRANKLIN
817 East Molloy Road
Mattydale, NY 13211
315-455-3215
aparations@aol.com

Activities

BRUCE PARKER
5891 Bennets Corners Road
Camillus, NY 13031
315-672-5198

Points Keeper

LORI NEWCOMB
100 Blanchard Avenue
Syracuse, NY 13209
315-635-4894

Flagging/Communication

MIKE FULLER
100 6th Street
Liverpool, NY 13088
315-451-0575

Rally Co-Chairman

FRANK BEYER
P.O. Box 131
Brewerton, NY 13029
315-449-2128

Rally Co-Chairman

MARK JOHNSON
1211 Madison Street
Syracuse, NY 13210
315-430-8056
mej@mejphoto.com

Solo II Program Chairman

MARK BIZZOZERO
9014 Jackson Street
Weedsport, NY 13166
315-247-8588
boz998@twcny.rr.com

Solo Board

TINA REEVES
17 Chi Mar Drive
Rochester, NY 14624
585-429-7613
info@nedivsolo2.org

Solo Board

MIKE DONOFRIO
4913 Look Kinney Circle
North Syracuse, NY 13212
315-451-7169

Solo Board

JASON FARR
4335 Belmont Drive
Liverpool, NY 13090
315-439-6377

Solo Board

ANTHONY DONOFRIO
4923 Look Kinney Circle
Liverpool, NY 13088
315-451-4798

Solo Board

JAY CARTINI
5351 Carrick Circle
Brewerton, NY 13029
315-676-4776

Competition and Licensing

JOSEPH ZINGARO
7396 Liffey Lane
Liverpool, NY 13088
315-451-5933

Area 10 Director

JOHN SHERIDAN
JOHN12009@aol.com

Webmaster

JASON FARR
4335 Belmont Drive
Liverpool, NY 13090
315-439-6377
autojive@mac.com

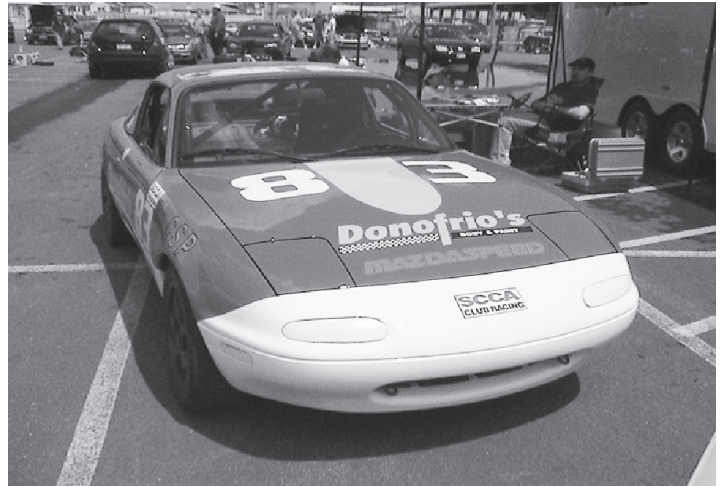
NATIONAL SCCA 1-800-770-2055

CLUB FAX: 315-637-9034

"The Snarling Exhaust" is published 11 times per year as a membership service by the Central New York Sports Car Club of America, Inc. Deadline for material submittal is the second Wednesday of the month (when the general membership meeting is held) to make the next month's issue. All editorial content and opinions submitted are solely those of the author and may not necessarily represent those of SCCA or Central New York Region Sports Club of America, Inc. Any comments, articles, and photos may be submitted to our newsletter editor via e-mail above. Subscription rate is \$15.00 per year. Commercial ad rates per year are \$250 for full page, \$165 for half page, \$110 per quarter page and \$75 for business card size. Monthly ad rates can be determined by dividing the annual rate by 5. CLASSIFIED ADS ARE FREE TO CNY REGION MEMBERS. Classified ads for others are \$5 per issue, paid in advance.

CNY REGION WEBSITE: www.cnyscca.com

The Assistant RE Corner ***by Mike Donofrio***



Well Joe Kramer is back but we decided to give him another month off from writing his column. After all he has only been home for a week.

July we had two more Solo II events. The first being an out of region event on the 17th at the Seneca Army Depot. The other at the New York State Fairgrounds on the 24th.

There were just over 100 entrants at the Fairgrounds which is the most we have seen at an event this year. The course filled the entire lot and required the use of all but one of the clubs cones. For the size, the course was also quite fast with times in the mid to high 50's. Unfortunately I was unable to attend since I was at Watkins Glen.

Approximately 350 cars were in attendance for the regional race at the Glen. No other group had as much of presence as the Mazda Miatas with a total of 70 entrants. At least two of these Miatas rolled over before the end of the weekend, thankfully none were mine.

However I am starting to make a correlation between Joe being out of the country, and me having car trouble. Last year I crashed my car at this same event, and this year the car tried but I wouldn't let it. So, I might be happier than anybody to have Joe back, and next time maybe he can go away in the winter!

My troubles began Saturday morning during qualifying. On the warm up lap I thought the front end felt a little loose, and I was right. The next lap I was up to race speed heading down the back straight, through the bus stop, and then going into the downhill right turn.

I aimed for the concrete strip with intents on passing a

slower car in the process. My front tires hit the concrete and immediately sent my car towards the outside of the track. When I finally regained control I noticed my steering wheel was significantly crooked. This was the start of a bad weekend!

I finished that lap and headed back to the paddock area where we found my left wheel to be toed out in the neighborhood of 5 degrees. Most importantly there was a suspension part that had shifted to make this change that we could not find. I have to thank the Murphy's for helping all day trying to diagnose the problem and realigning the front end, twice.

The second session was much of the same except I made three laps this time before I pulled off with the same trouble. Only to then wait in the impound while all the Miatas were weighed, and mine was a little underweight. So I was starting at the back which wasn't so bad since I was already starting at the back due to my front end slowing me down.

The car almost seemed dangerous but I was getting accustomed to the mystery steering. Even though I didn't feel like driving the car I knew I had to at least start the race and then decide if I thought I could make it to the finish. I went out during the race and was not only able to finish, I didn't hit anything, or anyone and managed to pass a couple cars. As far as I am concerned that was a win.

Don't forget the club picnic this month at the Onondaga Yacht Club.

Next month Joe will be filling this page, I enjoyed my time while it lasted.

General Membership Meeting Minutes

CNY General Membership Meeting held on July 13, 2005 at the American Legion Post in Liverpool, NY.

The meeting was called to order at 7:21pm by Assistant RE **Mike Donofrio**. The problem that he had was that the vacationing **Joe Kramer** refused to leave the official gavel. This created an issue for Mike and he had to use a full, and opened, beer bottle as a replacement. Fortunately, no beer was spilled in the incident, and once people realized what he was trying to do they settled down.

All he had to report as substitute RE was that we tried a new printer this month. The turnaround was quick, but due to mishandling by the dozen or so people involved it still didn't make it out before the meeting. He is confident though that in the very near future with this new printer and a streamlined approach the newsletter will, once again, arrive on time. On a side note, the website is up and running, CNYSCCA.COM.

Assistant RE: **Mike Donofrio** had nothing else to report since he was being overwhelmed with the awesome responsibility of being RE for the day.

Secretary: **I** read the minutes as printed in the un-mailed Snarling. They were accepted as read.

Treasurer: **Frank Beyer** was trying to downplay the rumor that he has recently purchased a new Ferrari. Interestingly enough we are out of money for the first time in years. Now I'm not putting the two items together.....but come on now.....I'm just saying.

Rally: **Mark Johnson** reported that he and **Frank Beyer** went to a rally in Ohio and had a lot of fun. They took **Frank's** OTF (other than Ferrari) car and abused it as much as possible giving them a top 10 finish. **Mark** then officially resigned as the rally co-chair with a short prepared statement that consisted of the words "I quit". We wish **Mark** the best of luck in GA as he has taken a 1 year teaching position on the subject of photo journalism.

Solo II: **Mark Bizzozero** mentioned that the first out of region event will be July 17th at the Seneca Army Depot and will be hosted by the Finger Lakes Region. It will be an extremely long course and pre registration is available on the Finger Lakes web site. The July 24th event at the NYS Fairgrounds will be chaired by **Mark & Jon Coffin** with a course designed by the legendary course designer, autocross mentor, and hamburger flipper, **Karl Hughes**.

Activities: **Bruce Parker** had a group of 20 or so trek to Watkins Glen over the weekend (with catering supplied by Mr. Chicken). The chicken was excellent, the baked beans OK, but the potato salad had a little too much mayo for his taste nor was there enough celery to give it the "crunch" that he desired. In addition,

the coconut cream pie lacked the body that he has grown accustomed to. Other than that, the day was great.

The next activity will be at the Onondaga Yacht Club on August 10 for the annual summer picnic. It will be catered by the same people as last year. The meeting will start at 6pm.

At this time in the meeting **Bruce** was trying to make a point when he admitted to having both a wife and a girlfriend. What we found interesting is that he made no attempt to correct himself. I only hope his wife doesn't read the Snarling.

Competition/Merchandising: **Joe Zingaro** recapped what was going to happen at the Glen in the near future as well as the changes to the facility that have occurred this year. It was at this point that he intentionally pushed **MiniMe** off the chair and sent him crashing to the ground. Unfortunately **MiniMe** was not wearing his cape and was unable to regain his balance before hitting the ground. He awoke a few minutes later, and you could tell he was upset about the whole incident. He was then seen calling his attorney. Updates will follow as they become available.

Flagging/Communication: **Mic Levy** added to the list of changes that **Joe** had mentioned. The vintage car races will be at the Glen on September 9th. They are looking for workers so if you're interested call **Mic** or **Mike Fuller**.

Old Business: **Jon Coffin** began asking questions as to how we want to handle the October meeting at Drivers Village. It was determined that after much discussion and a variety of "official votes" (prompted by region parliamentarian, **Lee Hidy**) that we would have the meeting at 6:30pm in the restaurant, the club would rent the NASAR simulator for an hour, and anyone who wishes to participate with the simulator would pay a nominal \$5.00 fee to reimburse the club.

New Business: We had a lively discussion as to how to increase membership. Some ideas were to increase our presence at local "drive/cruise" nights with our banner and literature; attending the car/racing events held at the NYS Fairgrounds with a similar display; trying to get involved with area schools; offering more incentives to members like test & tunes or driving instructions for Solo II; and getting in touch with local driving instructors to see if there is anything we can do to assist them to promote our cause.

Those of us in the Solo II program recapped what we were doing at the Solo II events to try to entice non members to join. When someone joins the fee is \$70.00. \$55.00 of which goes to national, \$15.00 goes to the region. We have been willing to waive the \$15.00 and let people join for \$55.00. We started making the offer last year. To date, no one has taken us up on it.

Jason Farr won the \$12.00 50/50 raffle.

The meeting was adjourned at 8:34pm.

Submitted
Jay Cartini
CNYR Secretary.

CNY-SCCA

Annual Picnic

Wednesday, August 10, 2005
6:00 PM

Onondaga Yacht Club

The annual picnic will again be on the second Wednesday of August (the normal SCCA meeting day second Wednesday of the month).

The venue will be, as in the past several years, the Onondaga Yacht Club in Liverpool.

The weather has been terrific for several years in a row and we anticipate the same this year. However, rain or shine, the Yacht Club offers a great place for our picnic.

Please be careful as you drive across the parkway to the Yacht Club from Sycamore Street.

As usual the food will be first class.

The fee is \$5.00 per person.

Try to find a better all you can eat and drink picnic for less than \$5.00 these days. Bet you can't!

As Rex says:

“BE THERE OR BE SQUARE!”

Results for Solo II July 24th, 2005 New York State Fiargrounds

| Rank | Class | Car Num | Driver | Car | Region | Run 1 | Run 2 | Run 3 | Run 4 | Best Run | OA Rank | PAX Time | PAX Rank |
|------|-------|---------|-----------------------|-------------------|--------|-----------|-----------|-----------|-----------|----------|---------|----------|----------|
| 1T | SS | 1 | Morton, Chris | 03 Chevy Z06 | FLR | 55.831(2) | 50.404 | 50.335 | 49.826 | 49.826 | 4 | 41.704 | 5 |
| 1T | AS | 95 | Seelbinder, Mark | 03 S2000 | FLR | 53.052 | 52.387 | 51.984 | 51.283 | 51.283 | 9 | 42.462 | 8 |
| 2T | AS | 2000 | Guerdat, Jeff | 01 Honda S2000 | | 53.867 | 52.507 | 51.864 | 51.463 | 51.463 | 10 | 42.611 | 12 |
| 3T | AS | 21 | Schoonmaker, Adam | 92 Corvette | FLR | 51.999 | 52.166 | 52.466 | 52.904 | 51.999 | 12 | 43.055 | 17 |
| 4 | AS | 121 | Schoonmaker, Alan | 92 Corvette | FLR | 52.705 | 52.890 | 53.970(1) | 52.700 | 52.700 | 16 | 43.636 | 23 |
| 5 | AS | 30 | Dawson, Matt | 04 Evo 8 | CNY | 56.017 | 55.772 | 62.681(2) | 54.635 | 54.635 | 36 | 45.238 | 36 |
| 6 | AS | 7 | Welch, James | 2003 S2000 | | 56.965 | 55.916 | OC | 56.890 | 55.916 | 46 | 46.298 | 46 |
| 7 | AS | 8 | Welch, Tom | 2003 S2000 | | 58.187 | 58.595 | OC | 57.844 | 57.844 | 64 | 47.895 | 63 |
| 8 | AS | 33 | Mazurkiewicz, Joe | 02 S2000 | CNY | 59.945 | 62.663 | OC | 58.103 | 58.103 | 65 | 48.109 | 66 |
| 1T | BS | 7 | Murphy, Timothy (Sr) | 05 Miata | | 60.359 | 58.730 | 55.985 | 58.986 | 55.985 | 48 | 45.964 | 42 |
| 2T | BS | 87 | Murphy, Tim (Jr) | 05 Miata | | 57.681 | 61.272 | 56.800 | DNS | 56.800 | 55 | 46.633 | 50 |
| 3 | BS | 20 | D'Amico, Joe | 76 Corvette | | 65.244 | 63.861 | 61.281 | 62.472 | 61.281 | 84 | 50.312 | 85 |
| 4 | BS | 22 | Scott, Fred | 82 Chevy Corvette | | OC | OC | 65.153 | 66.831 | 65.153 | 100 | 53.491 | 99 |
| 1T | DS | 68 | Izyk, John | 03 WRX | CNY | 67.424 | 58.454 | OC | 63.324(1) | 58.454 | 67 | 46.529 | 48 |
| 2T | DS | 70 | Cass, John | 02 Surbaru WRX | FLR | OC | 60.373 | 61.208 | 60.488 | 60.373 | 79 | 48.057 | 65 |
| 3 | DS | 94 | Nagle, George | 02 Subaru WRX | CNY | OC | OC | 64.895 | 61.202 | 61.202 | 83 | 48.717 | 70 |
| 4 | DS | 98 | Hunt, Jeff | 02 WRX | | OC | 64.343 | DNS | DNS | 64.343 | 95 | 51.217 | 90 |
| 1T | ES | 92 | Stehlik, David | 92 Mazda Miata | CNY | 57.955 | 57.715 | 57.977 | 59.156 | 57.715 | 63 | 46.518 | 47 |
| 2 | ES | 31 | Rourke, Fred | 82 RX-7 | CNY | 63.725 | OC | 61.630 | 61.773 | 61.630 | 87 | 49.674 | 79 |
| 1T | GS | 216 | Smith, Alan | 95 Neon | FLR | 54.611 | 53.806 | 52.704 | 53.187 | 52.704 | 17 | 41.215 | 2 |
| 2T | GS | 1 | Bucman, Brian | 05 Acura RSX-S | FLR | 54.585 | 54.022 | 53.061 | 52.753 | 52.753 | 20 | 41.253 | 3 |
| 3 | GS | 212 | Farr, Jason | 02 Civic Si | | 63.309 | 60.911 | 59.940 | 60.170 | 59.940 | 77 | 46.873 | 54 |
| 4 | GS | 26 | Remillard, Andrew | 99 VW Passat | | 62.066 | 60.080 | 61.291(1) | 62.695(1) | 60.080 | 78 | 46.983 | 55 |
| 5 | GS | 19 | Boyhan, Adam | 00 GTI | | 66.522 | OC | DNS | DNS | 66.522 | 102 | 52.020 | 96 |
| 6 | GS | 11 | Vacca, Matthew | 99 Audi A4 | | OC | OC | DNS | DNS | 999.999 | 109 | 999.999 | 109 |
| 1T | HS | 34 | Liedtke, Chris | 85 Celica GTS | FLR | 55.288 | 55.306 | 54.608 | 54.431 | 54.431 | 32 | 42.293 | 7 |
| 2T | HS | 711 | Bizzozero, Mark | 04 Mini | CNY | 58.023 | 56.563 | 58.006 | 56.278 | 56.278 | 52 | 43.728 | 25 |
| 3 | HS | 134 | Liedtke, Byron | 85 Celica | FLR | 60.513 | 59.189 | 59.450 | 56.818 | 56.818 | 57 | 44.148 | 28 |
| 4 | HS | 97 | Hunt, Peter | 95 Accord | | 64.690 | 62.841 | DNS | DNS | 62.841 | 92 | 48.827 | 71 |
| 1T | ASP | 606 | Gonzalez, Joe | 99 Corvette | | 57.585 | 57.570 | 55.921 | 56.273 | 55.921 | 47 | 47.533 | 60 |
| 1T | CSP | 91 | Kramer, Joseph | 99 Mazda Miata | CNY | 56.241 | OC | 57.517 | 54.476 | 54.476 | 33 | 45.651 | 39 |
| 2T | CSP | 35 | Kellett, Leo | 88 Toyota MR2 | FLR | 55.145 | 66.845(1) | OC | 54.558 | 54.558 | 35 | 45.720 | 40 |
| 3 | CSP | 57 | DeAmicis, Justin | 84 Mazda RX-7 | | OC | 64.920 | 57.241 | 54.962 | 54.962 | 41 | 46.058 | 43 |
| 4 | CSP | 87 | Hawkins, Paul | 87 RX7 | | 67.627 | OC | OC | 59.937 | 59.937 | 76 | 50.227 | 84 |
| 1T | DSP | 71 | Furlong, Andrew | 94 Acura Integra | MoHud | 54.531 | 53.781 | 52.729 | 52.937 | 52.729 | 19 | 43.343 | 19 |
| 2 | DSP | 71 | Chabra, Greg | 95 Neon | SNY | OC | OC | 56.128 | 53.971 | 53.971 | 28 | 44.364 | 29 |
| 3 | DSP | 17 | Dohanac, George | 95 Ply Neon | SNY | 57.999 | 55.384 | 54.754 | 54.022 | 54.022 | 29 | 44.406 | 30 |
| 1T | ESP | 35 | Little, Sr, George L. | 02 Camero SS | FLR | 60.462(3) | 53.835 | 54.367 | 54.355 | 53.835 | 25 | 44.468 | 32 |
| 2 | ESP | 6 | Hobron, Eric | 04 WRX STi | | OC | 58.254 | DNS | DNS | 58.254 | 66 | 48.118 | 67 |
| 1T | FSP | 102 | Miller, Todd | 86 Toyota Celica | | 54.815 | 53.477 | 52.623 | 52.679 | 52.623 | 15 | 42.677 | 14 |
| 2 | FSP | 33 | Toombs, Mike | 86 Toyota Celica | FLR | 54.257 | 54.130 | 53.292 | 53.623 | 53.292 | 23 | 43.220 | 18 |
| 3 | FSP | 54 | Heffron, Ed | 82 VW Rabbitt | CNY | 55.601 | 53.891 | 53.852 | 56.766(1) | 53.852 | 26 | 43.674 | 24 |
| 1T | STS | 555 | Gassman, Jason | 01 Subaru RS 2.5 | FLR | 54.070 | 54.309 | 54.587(1) | 52.712 | 52.712 | 18 | 42.117 | 6 |
| 2T | STS | 41 | Wyman, Derek | 96 Neon ACR | SNY | 58.612(2) | 55.954 | 53.574 | 54.883 | 53.574 | 24 | 42.806 | 15 |
| 3T | STS | 18 | Massey, Jacob | 91 Sentra SE-R | FLR | 55.187 | 54.277 | 54.366 | 54.571 | 54.277 | 31 | 43.367 | 20 |
| 4T | STS | 141 | Beck, Lawrence | 96 Dodge Neon | FLR | 57.737(1) | 54.513 | 55.154 | 55.664 | 54.513 | 34 | 43.556 | 22 |
| 5 | STS | 97 | Kuhns, Cory | 97 Integra | | 57.276(1) | 58.792(2) | 56.465(1) | 55.003 | 55.003 | 42 | 43.947 | 27 |
| 6 | STS | 7 | Crowley, John | 03 Civic | FLR | 62.229(2) | 58.871 | 56.718 | 56.130 | 56.130 | 50 | 44.848 | 34 |
| 7 | STS | 8 | Stewart, Brian | 97 Honda Prelude | | OC | OC | 57.046 | 57.386 | 57.046 | 58 | 45.580 | 38 |
| 8 | STS | 168 | Hirschey, Peter | 00 Impreza RS2.5 | CNY | 58.617 | 59.316 | 59.508 | 59.129 | 58.617 | 69 | 46.835 | 53 |
| 9 | STS | 74 | Redmond, Garrett | 99 Eclipse | CNY | 60.739 | 59.425 | DNS | DNS | 59.425 | 73 | 47.481 | 59 |
| 10 | STS | 143 | Sager, John | 95 Neon | | OC | OC | OC | 63.988 | 63.988 | 94 | 51.126 | 89 |
| 1T | STX | 7 | Johnson, Brad | 03 Sentra | FLR | 57.301 | 58.214(1) | 56.205 | 56.429 | 56.205 | 51 | 45.076 | 35 |

Results for Solo II July 24th, 2005 New York State Fiargrounds

| | | | | | | | | | | | | | |
|----|------|------|----------------------|---------------------|-------|-----------|-----------|-----------|-----------|---------|-----|---------|-----|
| 1T | SM | 89 | Little, George | 95 Mitsubishi GSX | FLR | 52.113 | 51.007 | 50.526 | 50.941 | 50.526 | 7 | 42.543 | 9 |
| 2T | SM | 79 | Gravius, Mark | 85 Camaro | CNY | 57.395(1) | 55.040 | 54.937 | DNS | 54.937 | 39 | 46.257 | 44 |
| 3T | SM | 04 | Cowley, Kevin | 04 SRT-4 | FLR | 59.853 | 59.221(1) | 56.551 | 57.321(1) | 56.551 | 54 | 47.616 | 61 |
| 4 | SM | 07 | Ehrlich, Matthew | 02 Subaru WRX | | OC | 76.845(6) | OC | 57.569 | 57.569 | 61 | 48.473 | 69 |
| 5 | SM | 319 | Bigness, William | 87 Shelby GLHS | | OC | 59.270 | OC | 59.103 | 59.103 | 70 | 49.765 | 81 |
| 6 | SM | 68 | Parrow, Chris | 02 Imprezza WRX | | 63.895 | 60.627 | DNS | DNS | 60.627 | 81 | 51.048 | 88 |
| 7 | SM | 56 | Mowers, Matt | 92 Integra | | OC | OC | DNS | DNS | 999.999 | 106 | 999.999 | 106 |
| 1T | SM2 | 17 | Harlow, Michael | 95 Corvette | | OC | 57.031 | 55.580 | 56.468 | 55.580 | 45 | 47.354 | 58 |
| 1T | AP | 11 | Meyer, William | 65 Cobra | | 66.763 | 74.740 | 61.868 | 60.489 | 60.489 | 80 | 52.323 | 97 |
| 2 | AP | 37 | Gallinger, Art | 88 Pontiac Fiero GT | CNY | OC | 64.482 | OC | OC | 64.482 | 97 | 55.777 | 101 |
| 1T | CP | 114 | Hoelscher, James | 82 Chevy Camaro | FLR | 55.538 | 54.106 | 54.702 | 56.583 | 54.106 | 30 | 46.261 | 45 |
| 2 | CP | 50 | BeeBe, Arnold | 87 Mustang 5.0 | MoHud | 55.901 | 55.907 | 55.174 | 55.011 | 55.011 | 43 | 47.034 | 56 |
| 1T | DP | 6 | Reeves, Brian | 90 Miata | CNY | 51.586 | 50.419 | 51.470 | 51.115 | 50.419 | 5 | 42.554 | 10 |
| 2 | DP | 61 | Reeves, Tina | 90 Miata | CNY | 50.468 | 51.079 | 51.699 | 52.282(1) | 50.468 | 6 | 42.595 | 11 |
| 1T | EP | 31 | Coffin, Jon | 83 VW Rabbit | CNY | 68.574 | 56.389 | 54.958 | 56.916(1) | 54.958 | 40 | 47.154 | 57 |
| 1T | FP | 47 | Darminio, Mike | 73 Porsche 914 | | 65.371 | 60.475 | 57.644 | 58.072 | 57.644 | 62 | 49.689 | 80 |
| 1T | AM | 99 | Hidy, Lee | 89 LNS Mini Sprint | CNY | OC | 62.389 | 58.528 | DNS | 58.528 | 68 | 58.528 | 103 |
| 2 | AM | 9 | Hidy, Brian | 79 Tobias Sprint | CNY | DNS | DNS | DNS | DNS | 999.999 | 108 | 999.999 | 108 |
| 1T | DM | 10 | Bernard, Christopher | 90 S-7 | NER | 48.855 | 48.724 | 49.280 | 48.516 | 48.516 | 2 | 42.646 | 13 |
| 2 | DM | 110 | Hughes, Karl | S-7 | CNY | 58.178(1) | 49.535 | 197.943 | 52.596(1) | 49.535 | 3 | 43.541 | 21 |
| 3 | DM | 7 | Sawyer, Leo | 89 H&S Sabre 7 | | OC | 57.910 | 56.698 | 55.571 | 55.571 | 44 | 48.847 | 72 |
| 1T | EM | 36 | Ticonchuk, Mike | 75 Porsche | | 61.147(4) | 52.245 | 52.977 | 51.192 | 51.192 | 8 | 45.356 | 37 |
| 2T | EM | 22 | Franklin, Rex | 62 MG Midget | CNY | 52.836 | 51.680 | OC | DNS | 51.680 | 11 | 45.788 | 41 |
| 3 | EM | 11 | Riesbeck, Jason | 86 Mazda RX7 | FLR | 54.874 | 55.374 | 53.957 | 55.274(1) | 53.957 | 27 | 47.806 | 62 |
| 4 | EM | 122 | Franklin, Tammy | 62 MG Midget | CNY | 62.913 | 59.981 | 59.130 | DNS | 59.130 | 71 | 52.389 | 98 |
| 5 | EM | 21 | Xamounry, Joe | 83 Mazda RX-7 | | OC | 78.303 | DNS | DNS | 78.303 | 105 | 69.376 | 105 |
| 1T | FM | 48 | Ciarlei, Brian | 88 Red Devil | CNY | OC | 50.056 | 48.431 | 48.707 | 48.431 | 1 | 42.813 | 16 |
| 1T | F125 | 11 | Mogle, Richard | CRG | CNY | OC | 54.485 | 52.825 | 57.104 | 52.825 | 21 | 49.603 | 77 |
| 2T | F125 | 1 | Gregory, Ben | allkart | | 60.245 | 55.664 | 54.731 | 65.656 | 54.731 | 37 | 51.392 | 92 |
| 3 | F125 | 11 | Cartini, Jay | Cart | CNY | 55.590 | 56.728 | 56.229 | 54.929 | 54.929 | 38 | 51.578 | 94 |
| 4 | F125 | 51 | Gregory, Jack | Kart | | OC | OC | 57.500(1) | DNS | 57.500 | 60 | 53.993 | 100 |
| 1T | FJ1 | 21 | Bucknam, Jacob | 92 T&M | FLR | 57.663(1) | 52.605 | 52.229 | OC | 52.229 | 14 | 40.791 | 1 |
| 1T | FJ2 | 134 | Liedtke, Myra | 93 Genesis Kart | FLR | 52.609 | 53.614 | 52.671 | 52.068 | 52.068 | 13 | 41.498 | 4 |
| 2T | FJ2 | 3 | Furco, Tara | Kart | CNY | 66.361 | 63.914 | 62.093 | 63.110 | 62.093 | 89 | 49.488 | 76 |
| 3 | FJ2 | 181 | Mogle, Jonathan | cart | | 68.512(1) | 63.389 | 65.538 | 65.779(1) | 63.389 | 93 | 50.521 | 87 |
| 4 | FJ2 | 18 | Mogle, Caye | Cart | | OC | 64.460 | 68.616 | 68.168 | 64.460 | 96 | 51.375 | 91 |
| 5 | FJ2 | 13 | Gregory, Stephanie | Kart | | OC | OC | OC | 70.637 | 70.637 | 103 | 56.298 | 102 |
| 1T | DSN | 11 | Haas, Evan | 05 Subaru WRX | | 57.128 | 56.689 | 56.083 | 56.250 | 56.083 | 49 | 44.642 | 33 |
| 2T | ASN | 3 | Dawson, Mark | EVO | | 62.183 | OC | 59.866 | 56.320 | 56.320 | 53 | 46.633 | 51 |
| 3T | STUN | 1009 | Hughes, Michael | 05 WRX STi | | OC | OC | 60.989 | 57.254 | 57.254 | 59 | 46.834 | 52 |
| 4T | FSPN | 302 | Lea, Andrew | 97 Honda Civic | | 66.202 | 61.648 | 62.773(1) | 59.133 | 59.133 | 72 | 47.957 | 64 |
| 5T | GSN | 77 | Bouron, Toni | 05 Mazda | | OC | 64.664 | 61.881 | 67.043(2) | 61.881 | 88 | 48.391 | 68 |
| 6 | STSN | 175 | Ossevoort, Jerry | 01 VW Golf | | 62.216 | 61.537 | OC | 61.138 | 61.138 | 82 | 48.849 | 73 |
| 7 | GSN | 69 | Poniros, George | 03 Altima | | 73.193 | 64.867 | 65.068 | 62.742 | 62.742 | 90 | 49.064 | 75 |
| 8 | ESN | 8 | Newton, Scott | 87 Porsche 944 | | OC | OC | 62.904 | 61.625 | 61.625 | 86 | 49.670 | 78 |
| 9 | HSN | 2 | Morris, Steven | 00 Ford Focus | | 69.899 | 67.627 | 66.654 | 64.576 | 64.576 | 98 | 50.176 | 83 |
| 10 | STSN | 243 | Sager, Matthew | 95 Neon | | OC | 82.040 | 64.150 | 62.799(1) | 62.799 | 91 | 50.176 | 82 |
| 11 | GSN | 20 | Hunt, Bradford | 89 Volvo 740 | | OC | 65.779 | DNS | DNS | 65.779 | 101 | 51.439 | 93 |
| 12 | BSPN | 67 | Hicks, Brent | 97 BMW M3 | | OC | OC | OC | 61.615 | 61.615 | 85 | 51.695 | 95 |
| 13 | GSN | 59 | Harrington, Roger | 00 Eclipse | | OC | 77.112 | DNS | DNS | 77.112 | 104 | 60.302 | 104 |
| 14 | STSN | 24 | Miller, Torey | 97 Civic | | OC | OC | DNS | DNS | 999.999 | 107 | 999.999 | 107 |
| 1T | HSL | 234 | Liedtke, Sheryl | 85 Celica | | 62.277 | 60.641 | 60.468 | 59.928 | 59.928 | 75 | 46.564 | 49 |
| 1T | ESPR | 8 | Modlin, George | 03 Mitsu EVO | FLR | 54.736 | 53.947 | 53.079 | 53.720 | 53.079 | 22 | 43.843 | 26 |
| 2T | GSR | 27 | Rizzo, Tim | 05 Mini Cooper S | | 58.730 | 58.725 | 57.250 | 56.809 | 56.809 | 56 | 44.425 | 31 |
| 3 | DSPR | 9 | Cass, Brian | 99 Neon | | OC | 59.576 | DNS | DNS | 59.576 | 74 | 48.971 | 74 |
| 4 | HSR | 68 | Ohlbaum, Paul | 97 Honda Civic | | OC | 64.857 | OC | OC | 64.857 | 99 | 50.394 | 86 |

You are cordially invited to attend the
Central NY Region of the Porsche Club of America
Autocross at Watkins Glen International Racetrack
August 20, 2005

Try your skills on a challenging cone course setup across from the concession stand.

Questions or more info call Brian Daley, president, CNY Region 315-343-8442.

Please complete the entry form and mail it in early to secure your spot.

ENTRY FORM FOR THE CNY PCA AUTOCROSS
AT WATKINS GLEN ON AUGUST 20, 2005

LOCATION: Watkins Glen Racetrack, Watkins Glen, NY – New York's Thunder Road
DEADLINE FOR APPLICATION: August 12, 2005

PLEASE MAIL COMPLETED FORM AND TOTAL ENTRY FEE TO: Brian Daley, President CNY Region, 3275 County Route 176, Oswego, NY 13126
PAYABLE TO: CNY-PCA

Please complete one form per car or driver if sharing a car.

Name: _____

Address: _____

Phone Home: _____
Work: _____
Cell: _____

Car Info - Make: _____
Year: _____
Model: _____

Class (If Known): _____

Modifications: _____

Preferred Car Number _____

AUTOCROSS

ARRIVAL TIME: 08:00AM (or earlier, track opens at 6am)
REGISTRATION STARTS AT: 08:15AM
TECH INSPECTION STARTS AT: 08:15AM
FIRST CAR OFF AT: 09:00AM

Autocross Fee (per driver): \$35 Fee _____

TOTAL FEE TOTAL \$ _____

ALL PARTICIPANTS & ATTENDEES ARE REQUIRED TO SIGN THE WGI TRACK WAIVER & THE PCA WAIVER.

Watkins Glen Racetrack has a policy that no one can be admitted unless they are on the list at the main gate. If you do not pre-register you will not be on that list and therefore will not be able to get into the track.

Upcoming Events

Solo II:

August 21st

Burdick's Driver's Village

August 28th

Erie Community College

(WNYR Out of Region Points Event)

September 3rd

Corning Community College

(Glen Region Out of Region Points Event)

September 11th

Cherry Valley Enduro

October 9th

Shoppingtown Mall



Memorandum

Jeremy Thoennes
Technical Manager
Club Racing
jthoennes@scca.com

To: Competitors, Stewards, and Scrutineers

From: Jeremy Thoennes

Re: SRF Tire Rule Change

Date: July 7, 2005

During the Board of Directors conference call on June 28, 2005, the following item was approved. The Board requests that GCR Section 1.2.2.C be utilized for notification:

Effective July 5th, 2005, Add the following to section 17.1.5.C Spec Racer Ford Specifications Chassis F:

- 1. A competitor must start the race on the same set of tires (meaning the original four) as used in a qualifying session for the race. The only exception is rain tires. It is the responsibility of the competitor to ensure their tires are marked appropriately for qualifying and race sessions. It is recommended that regions offer these services at a central location, such a pre-grid or tech.*
- 2. A change of tires during or between a qualifying and race session shall automatically result in all previous times being disallowed.*
- 3. If a tire is damaged during a qualifying session, the competitor may replace that tire with a used tire upon approval of the Chief Steward. Should a tired be replaced for any reason, the competitor shall forfeit his or her grid position and start at the back of the grid.*

Please contact me if you need further information.

Thanks,

Jeremy Thoennes
Technical Manager, Club Racing



SCCA
Sports Car Club of America

Membership Application

Dear Prospective SCCA Member:

To apply for membership in the Sports Car Club of America, the world's largest member participation automotive organization, please complete the form below in full and return, with payment, to your region or the SCCA Membership Department, P.O. Box 19400, Topeka, KS 66619-0400.

PLEASE PRINT OR TYPE

Name _____ Birthdate ____ / ____ / ____

Address _____ Telephone (____) _____

City _____ State _____ Zip _____ County _____

E-mail _____

Single Married Spouse's Name _____ Birthdate ____ / ____ / ____

Spouse Member Number If Current Member _____

IF APPLYING FOR FAMILY MEMBERSHIP (husband/wife and children), list names and ages of children **under age 21**:

03 Name _____ Birthdate ____ / ____ / ____

04 Name _____ Birthdate ____ / ____ / ____

05 Name _____ Birthdate ____ / ____ / ____

06 Name _____ Birthdate ____ / ____ / ____

Have you been an SCCA member before? No Yes: Year _____ Previous Member No. _____

Please send me a Crew License (check box)

PRIMARY INTEREST(S) IN SCCA:

Please indicate the area(s) of SCCA in which you plan to participate, or which interest you most. Your response will be used to allocate your national dues to the areas you indicate. Thank you.

Club Racing Pro Racing ProRally RoadRally Solo

To find your region dues, visit <http://www.scca.com/Join/Index.asp?reference=dues>

| | Annual National Dues | | Annual Regional Dues | | Total |
|----|--|---|---------------------------------|---|----------|
| 01 | <input type="checkbox"/> Regular Member \$55.00 | + | Regular Member \$ _____ | = | \$ _____ |
| 03 | <input type="checkbox"/> Spouse Member \$15.00 | + | Spouse Member \$ _____ | = | \$ _____ |
| 10 | <input type="checkbox"/> Family Membership \$85.00 | + | Family Membership \$ _____ | = | \$ _____ |
| | <input type="checkbox"/> First Gear \$ _____ | + | First Gear (Reg. dues) \$ _____ | = | \$ 45.00 |
| | (you must be under age 21) | | | | |

National Office Use Only

C- _____ \$ _____

C- _____ \$ _____

C- _____ \$ _____

Source

Enclosed is my check or money order for \$ _____ U.S. DO NOT SEND CASH.

VISA MC No. _____ Expiration Date _____

I hereby apply for membership in the Sports Car Club of America, Inc. and its _____
Region and agree to abide by the bylaws. (Region Name/Number)

Applicant's Signature _____ Date _____

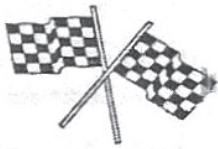
**Dues include payment for subscription to SportsCar (\$24 value)
(Dues are not deductible as charitable contributions)**

CNYR SCCA
Frank Beyer
P.O Box 131
Brewerton, NY 13029

ADDRESS SERVICE REQUESTED

US POSTAGE
PAID
PRSR STD
SYRACUSE, NY
PERMIT NO. 1312

POSTMASTER - TIMELY MATERIAL WITHIN



CORVETTE SALES

Parts - Used and New
Alignments - Brakes
Suspension - Inspection
Flat Bed Towing
Electrical

CORVETTE BARN

Endurance Racing Enterprises, Inc. - 20th Anniversary 1994

BOB BAECHE
315 468-0226

104 Harbor Street
Syracuse, NY 13204

SHARLAY

**MACHINE &
FABRICATION**

JOE CIARLEI

2843 Roman Avenue

Marcellus, NY 13108

Phone: 315-673-1343

email: jciarlei@twcny.rr.com

Low Volume Machining
Prototype Fabrication

CNC Milling
Sheet Metal

Ben Gregory

(315)675-3157

ROLLING
Chassis Co.

Streetrods, Customs, Competition, Pro Street

www.RollingChassisCo.com

- ONLY 30 MINUTES FROM SYRACUSE -
731 County Route 17, Bernhards Bay, NY 13028



(315) 463-5888

www.fehman.com

Corner of Midler Ave. and James St.
Syracuse, NY

High quality repairs made by an experienced
crew of ASE certified master techs on all makes
and models since 1929

"Buy Where Automotive Professionals Buy"

All Major Credit Cards Accepted

Proud sponsors of the CNY SCCA Solo series for 15 years!

WAGNER

MONROE

brombo

BOSCH

ACDelco

MOOG

MON - FRI 7:30AM - 5:30PM • SAT & SUN - CALL FOR HOURS